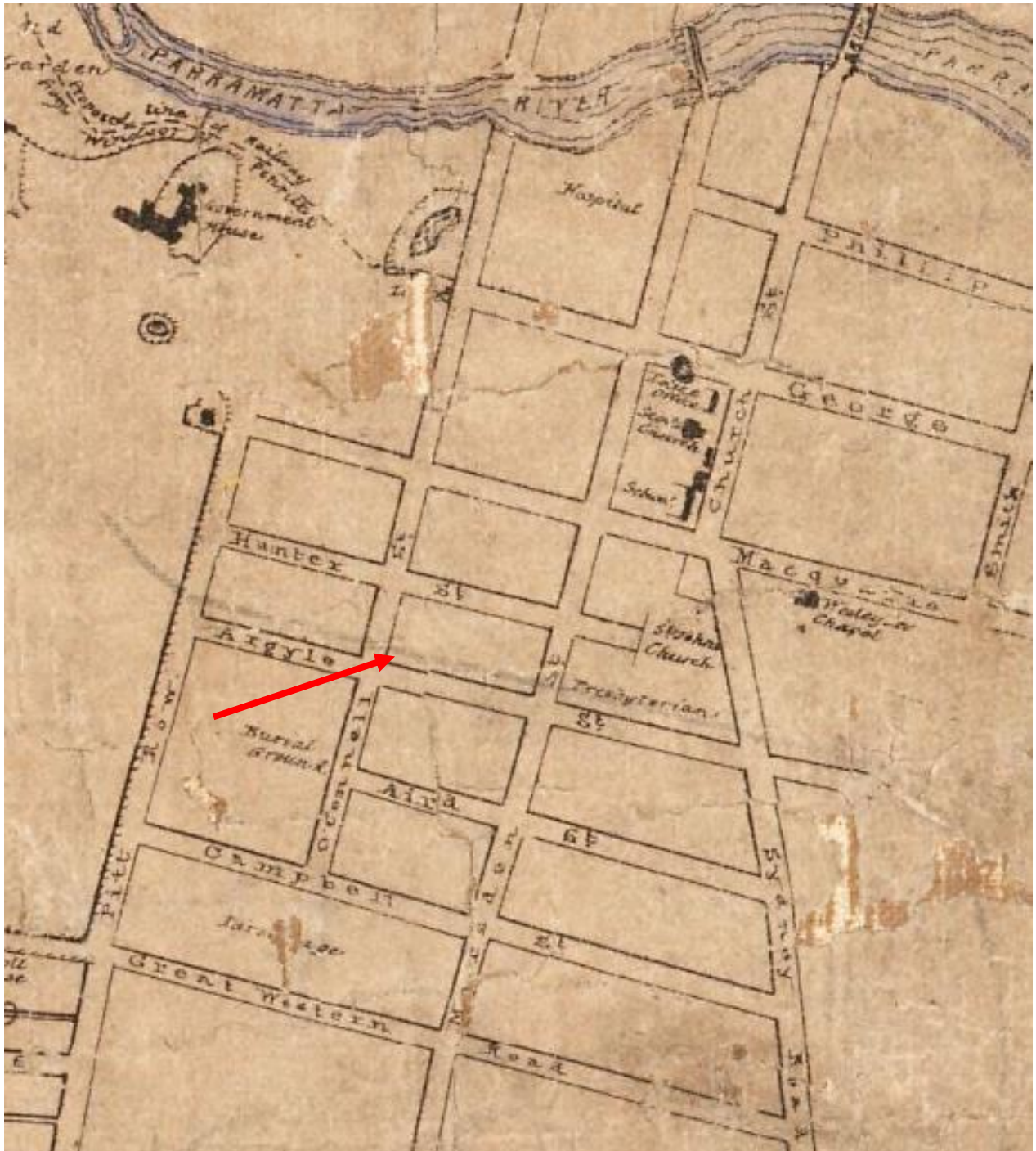


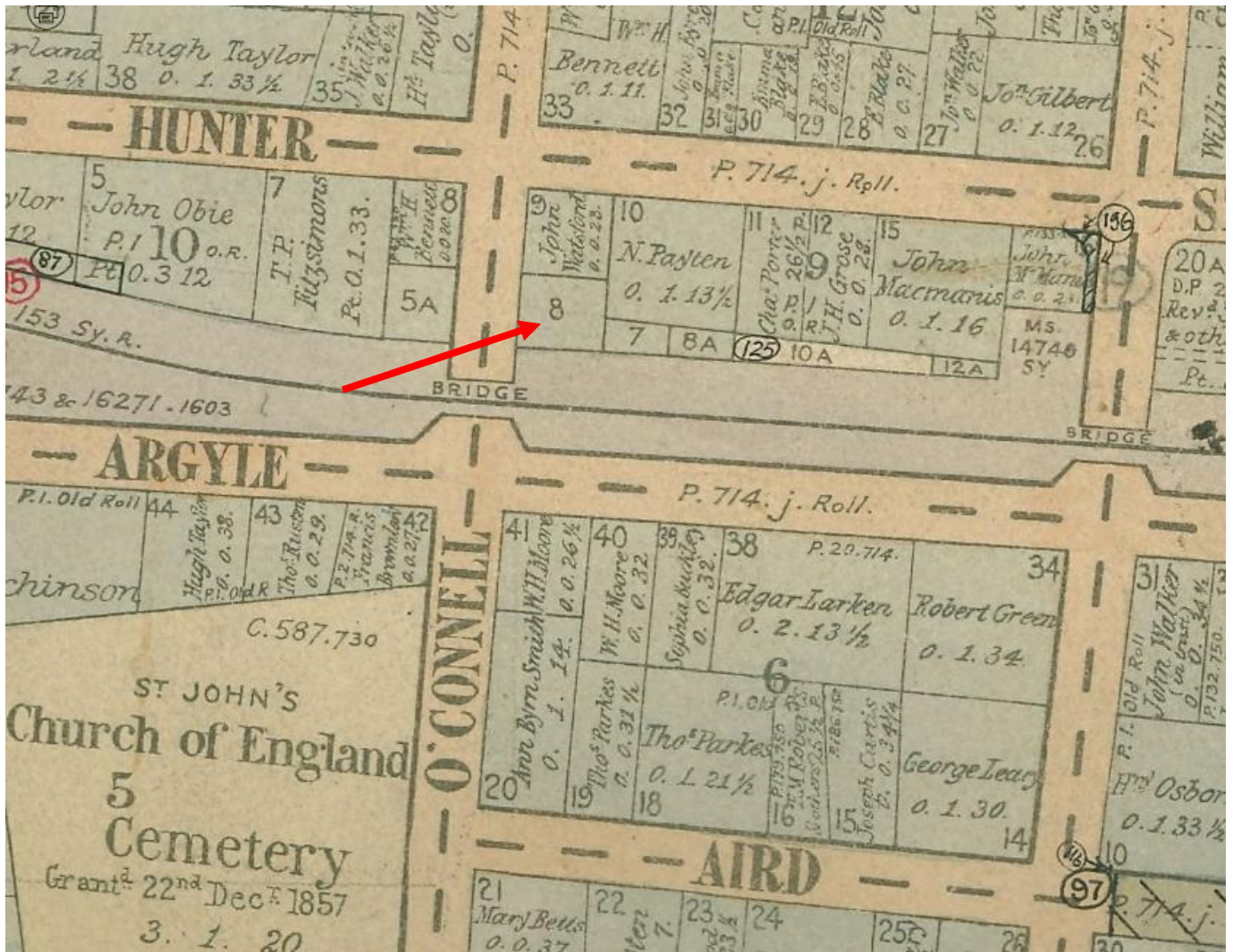
1842 0829 Entwistle William land purchase OConnell St Parramatta NSW HLRV



1857 map of Parramatta

William Entwistle's land at Parramatta was near the North-Eastern corner of O'Connell and Argyle Streets, diagonally opposite the Church of England Burial Ground.

1842 0829 Entwistle William land purchase OConnell St Parramatta NSW HLRV



Later map of Parramatta, including the rail line built in the late 1850s

William Entwistle's land in Parramatta was Allotment 8 in Section 9, situated on the Eastern side of O'Connell Street. It was officially purchased by Entwistle on 29 Aug 1842 having been originally leased to Michael Bowyer (?) in 1823.

It was 0 acres 0 roods and 24.5 perches. This is about an eighth of an acre; or half a house block.

The block was not quite square, as it appears on this map. Part of the original block has been incorporated into the railway corridor that came later.